

Stratmoor Heights

Semi-Custom Homes

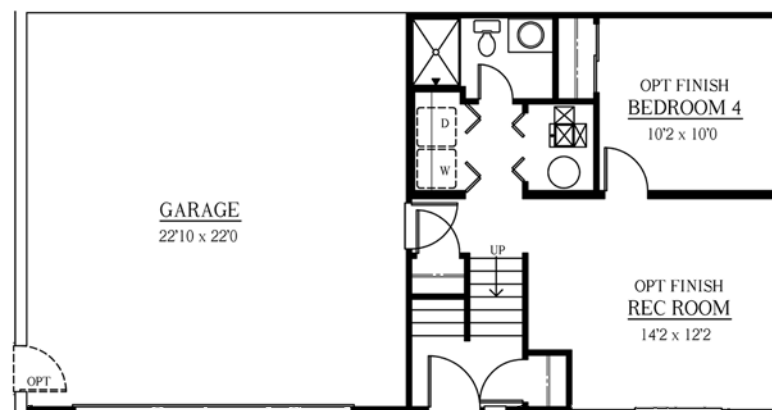
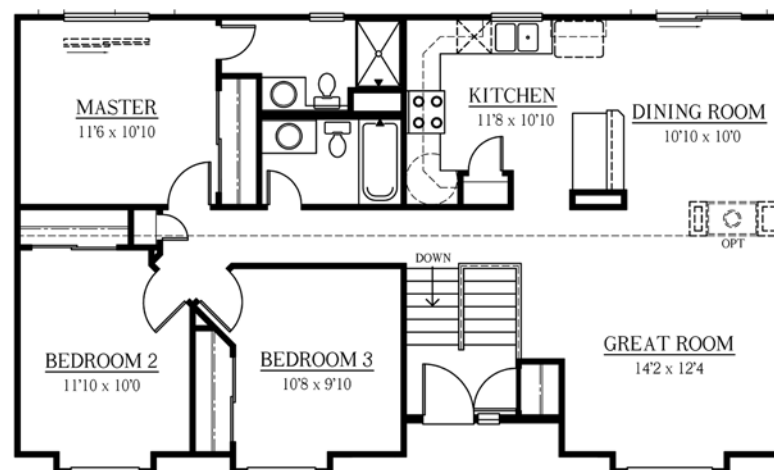
This exciting split-level is "light, bright, and open!" Vaulted ceilings throughout the entire upper level, combined with plant ledges, niches, and other special features, embellish this excellent plan.

The gourmet kitchen is very special! A see-thru fireplace separates the spacious great room from the dining room. 3 bedrooms and 2 bathrooms complete this level. The lower level can be finished to include a 4th bedroom, a large recreation room, and a 3rd bathroom.

The added bonus is an enormous garage.



Windom 1244



Total Square Feet
1706

Upper:
1171 (finished)

Lower:
132 (finished)

Lower:
403 (unfinished)

Floorplans, specifications,
prices, incentives, features, and availability
are subject to change without notice.

Exclusively
Marketed By:



Lonnie White
(719) 475-7200