

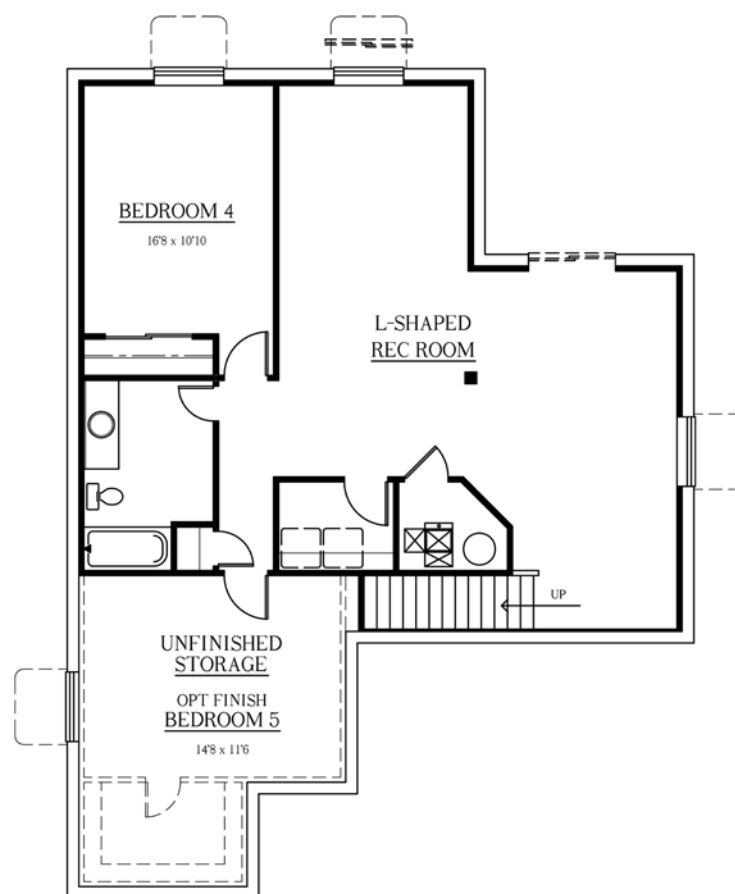
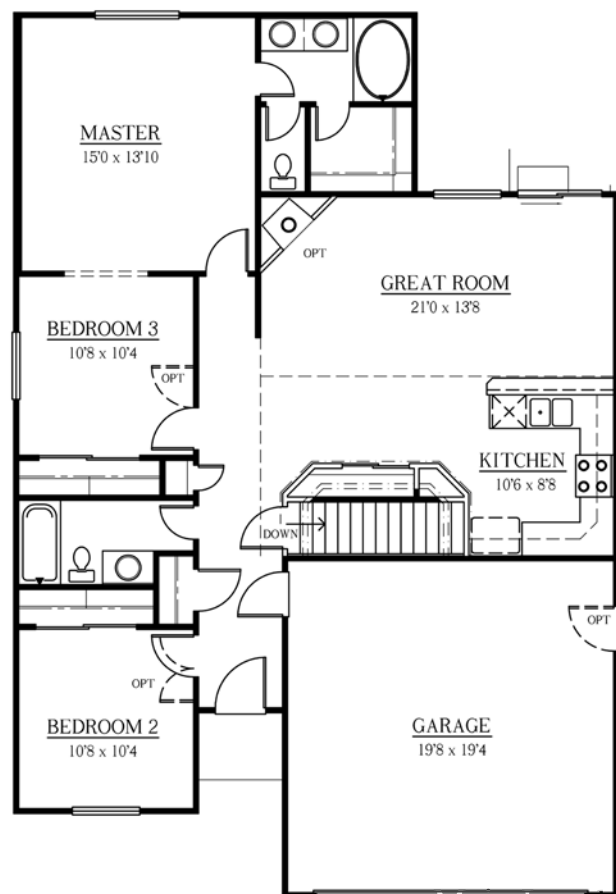
Stratmoor Heights

Semi-Custom Homes

This cozy rancher can be customized to fit any lifestyle! The kitchen, great room, and dining room have vaulted ceilings, and are embellished with a corner fireplace that has an entertainment niche above. There is also a special, custom, built-in shelving center across the room. The large master bedroom offers a 5 piece bathroom, walk-in closet, vaulted ceilings, and an optional sitting room or den. The front bedroom can also serve as a study. A spacious hall bathroom completes this level. The basement can be finished to include an enormous recreation room, a 4th, 5th, or 6th bedroom, and a 3rd bath.



Sherman
1260



Total Square Feet
2520 (approx.)

Main:
1260 (finished)

Basement:
1260 (unfinished)

Floorplans, specifications,
prices, incentives, features, and availability
are subject to change without notice.

Exclusively
Marketed By:



Lonnie White
(719) 475-7200