

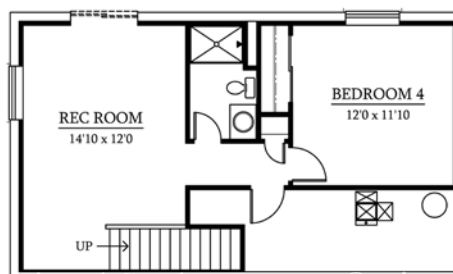
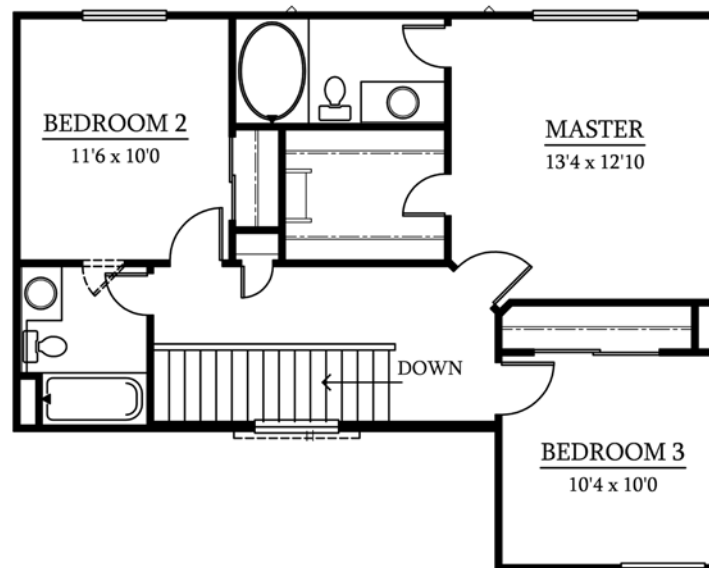
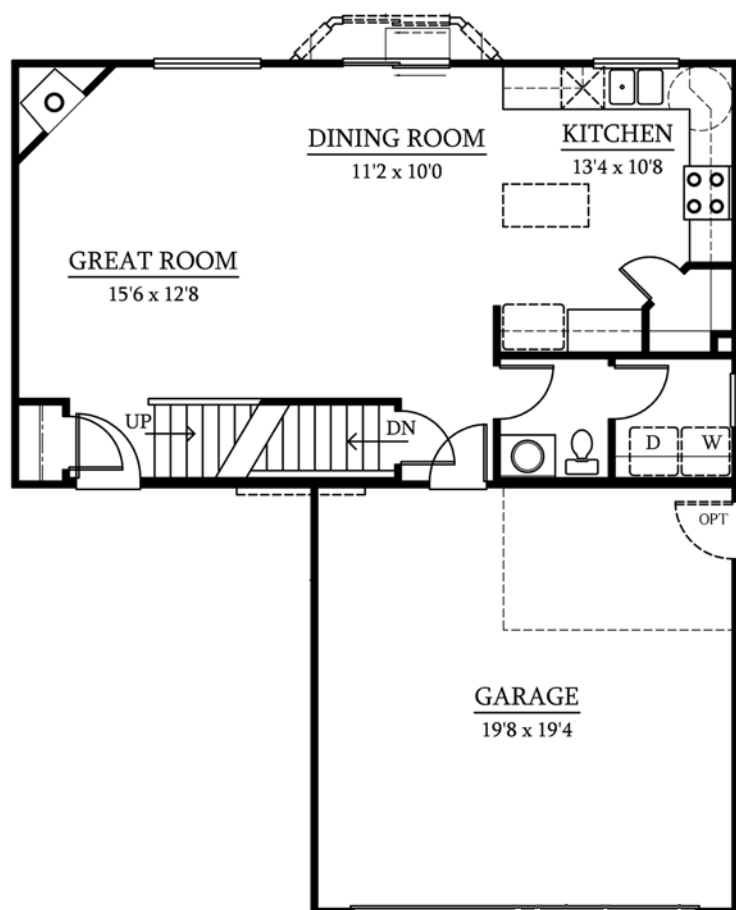
Stratmoor Heights

Semi-Custom Homes

This sharp 2-story, with 9' main level ceilings, features a cozy corner fireplace in the "open" great room. The very functional kitchen offers a corner pantry and an optional center island. A nice dining room with optional bay window and a main level bath with separate laundry room complete this wonderful floor plan. The upper level consists of 3 bedrooms and 2 bathrooms, and features a wonderful walk-in closet in the master. The basement can be finished to include a 4th bedroom, recreation room and a 4th bathroom.



Cameron
1396



Total Square Feet
2130

Upper:
754 (finished)

Main:
696 (finished)

Basement:
680 (unfinished)

Floorplans, specifications,
prices, incentives, features, and availability
are subject to change without notice.

Exclusively
Marketed By:



Lonnie White
(719) 475-7200