

# Stratmoor Heights

Semi-Custom Homes

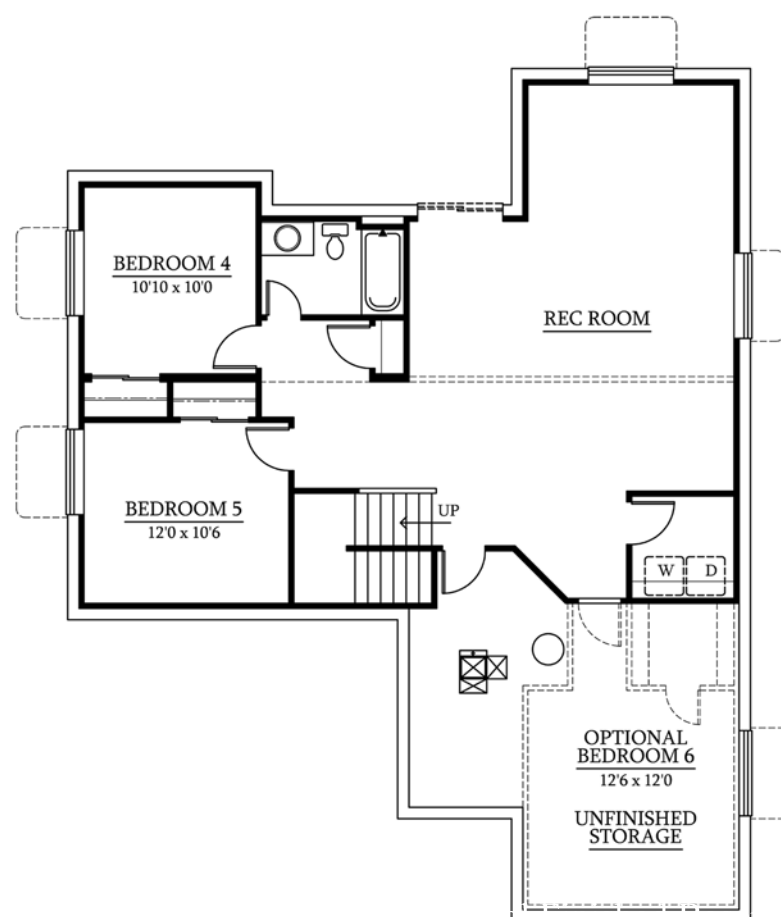
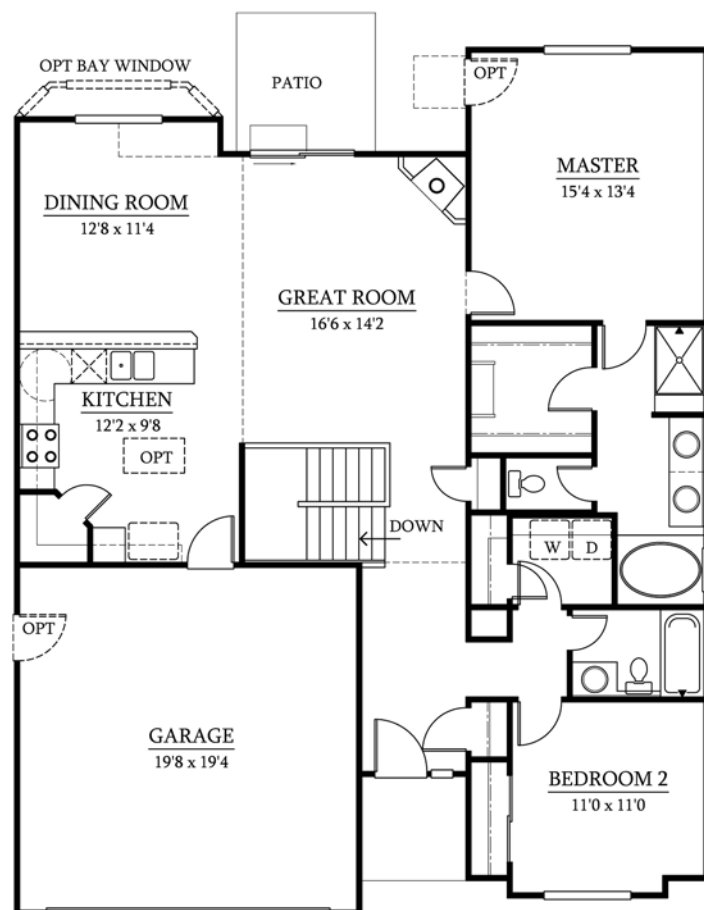
This phenomenal rancher features a fabulous kitchen, dining room, and great room layout! The corner fireplace and arched entertainment center are visible from just about everywhere. Vaulted ceilings, 9' ceilings, custom niches, and plant ledges add to the excitement of this home. The large master suite includes a 5 piece bathroom as well as a walk-in closet. The front bedrooms are strategically designed for a growing family, or a guest room with an optional study. The basement can be finished to include a gigantic recreation room, 4th, 5th, or 6th bedrooms, and a 3rd bathroom.



## Belford

### 1422

w/ large master



Total Square Feet  
2866 (approx.)

Main:  
1450 (finished)

Basement (optional):  
1416 (unfinished)

Floorplans, specifications,  
prices, incentives, features, and availability  
are subject to change without notice.

Exclusively  
Marketed By:



Lonnie White  
(719) 475-7200

[www.ParadigmRealEstate.net](http://www.ParadigmRealEstate.net)